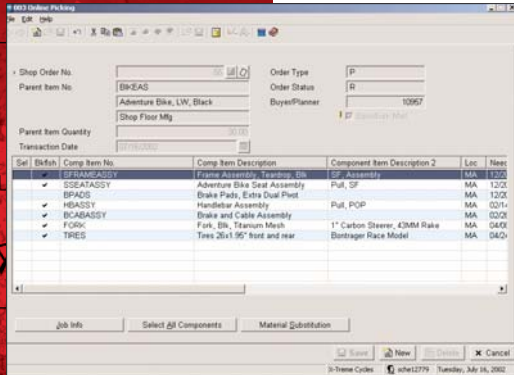




Macola ES

SHOP FLOOR CONTROL



The on-line material picking process is a quick and easy way to issue components to a shop order.

Advanced outside processing

SFC enables you to easily create purchase orders from within SFC for outside processing operations. It enables you to easily create an unreleased PO from within SFC, and allows the receiving function to receive directly into Work In Process (WIP). A single PO also gives you the capability to receive into multiple shop orders. Receiving also has the capability to receive an outside process into multiple shop orders.

On-line picking and dispatching

Macola ES can increase your ability to move to a paperless environment with on-line dispatchers and on-line, interactive, material picking. These two unique interfaces allow the stock room and the scheduler to work with the system interactively, without printing them.

Shop floor activity reporting

Activities reported from the shop floor, machine hours, and quantity completion - are processed online. Labor entry processes have been designed to speed-up the entry process for those sophisticated users who want to collect this data on-line, electronically, through a shop data collection system.

Material back flush and issuing

Material can be issued against a shop order using a number of options:

- They could be backflushed at count point operations. The backflush capability is through BOM and gives you the flexibility to backflush selective material and closely control the remaining material.
- All material can be issues up front to cater to a kit issue environment.
- Material can be issued one-at-a-time for greater control.
- Material can be issued out of multiple floor locations and multiple bins. You can also issue and track items that are serialized and lotted.

More Information

For more information on Macola ES, please visit www.macola.com or call 1.800.468.0834, extension 550.

800.468.0834



www.macola.com

Exact Software North America
300 Brickstone Square
Andover, MA 01810
Tel: 888.877.5126
Fax: 978.474.9317
Sales: 800.468.0834 ext 550

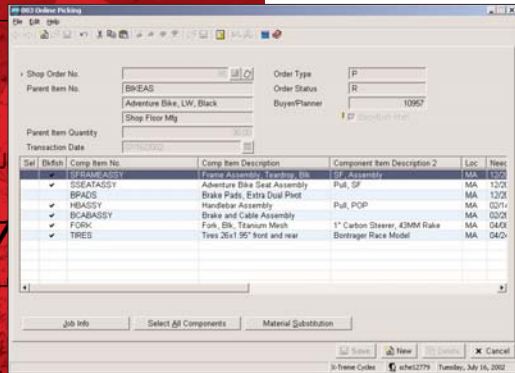
Boston, MA
Cambridge, ON
Columbus, OH
Fort Lauderdale, FL

Houston, TX
Los Angeles, CA
Orlando, FL
San Francisco, CA



Macola ES

SHOP FLOOR CONTROL



The shop order entry screen lets you create shop orders in a streamlined manner and release them to the shop

Macola ES's Shop Floor Control (SFC) package is designed to help manufacturers effectively execute their production plans at all levels.

Important advantages of Shop Floor Control are:

- Issue materials manually or automatically
- Purchase and track outside services
- Use online picking and dispatching
- Create shop orders from sales orders
- Report and track scrap
- Create orders manually or from MRP
- Interface to costing module
- Inquire on shop order status
- Maintain transactional history

The SFC module is designed with the detailed management of activities and the flow of materials inside the plant - including the workers, materials, machines and time utilized in production. Its unique features interface with a number of Macola's other manufacturing software modules. Macola ES's SFC allows you to quickly and efficiently create shop orders and control all aspects of the order without entering a lot of unnecessary data. It provides you the added flexibility to keep on top of internal or customer-driven changes, including changes to quantity and dates, even after release.

With SFC, jobs can be used to group multiple shop orders and control all aspects of the order without entering a lot of unnecessary data. If you do not require grouping it can be easily configured to create jobs when shop orders are created. It provides you the added flexibility to keep on top of internal or customer driven changes, including changes to quantity and dates even after release. For manufacturers producing a number of products both in make to stock and custom environments, Macola ES's Inventory Management (I/M), Bill of Material (BOM) and Standard Product Routing (SPR) packages will speed the creation of shop orders.

Manufacturing Cost Accounting interface

Macola ES's Shop Floor Control requires the use of the Manufacturing Cost Accounting (MCA) package (formerly Job Costing). With MCA, you have the ability to efficiently capture costs for accounting purposes.

You can post entries to the general ledger (G/L) for material, absorbed labor and overhead costs, post variances between the planned and actual (applied) costs for these items directly to the general ledger module.

Easy integration with Order Entry

SFC makes it possible to easily create shop orders directly from Order Entry (O/E) for the back-ordered quantity. When completed quantity is entered in SFC, it automatically updates the quantity to ship in the customer order.

Streamlined integration with MRP

Both computer-planned and firm-planned orders can be integrated from Material Requirements Planning (MRP) into SFC. This integration is streamlined to quickly release these orders to SFC by declaring ranges of orders to release.

